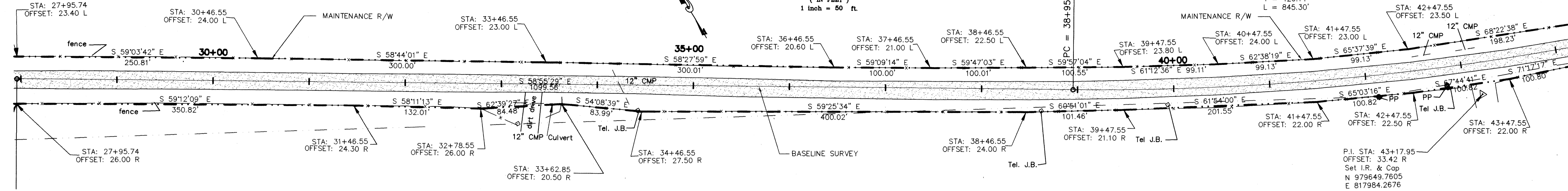
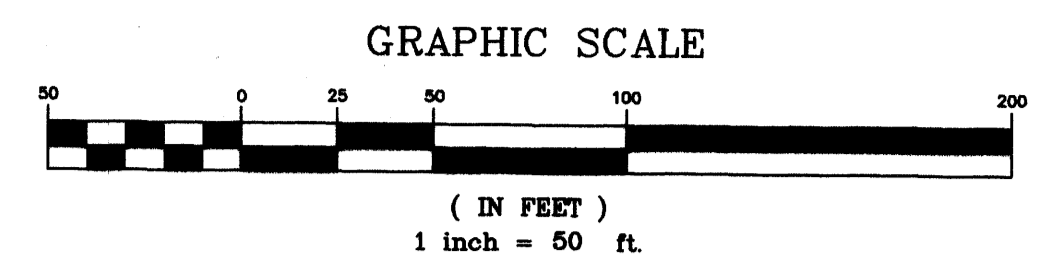
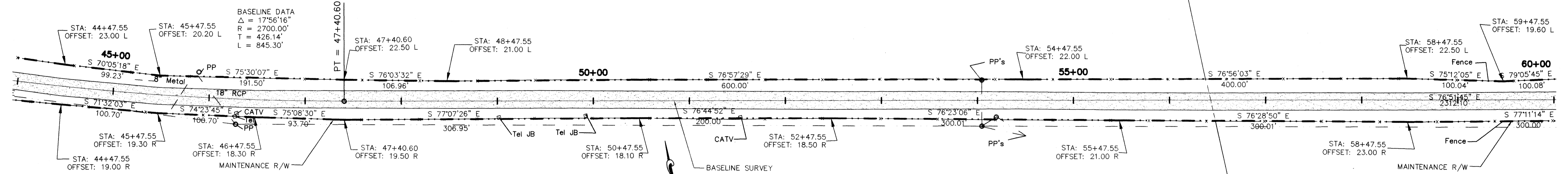
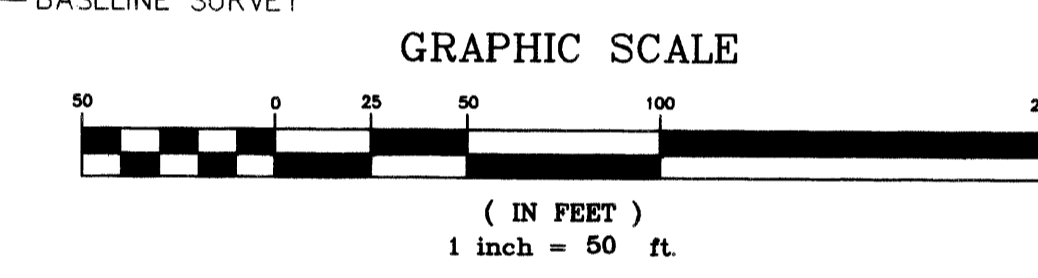


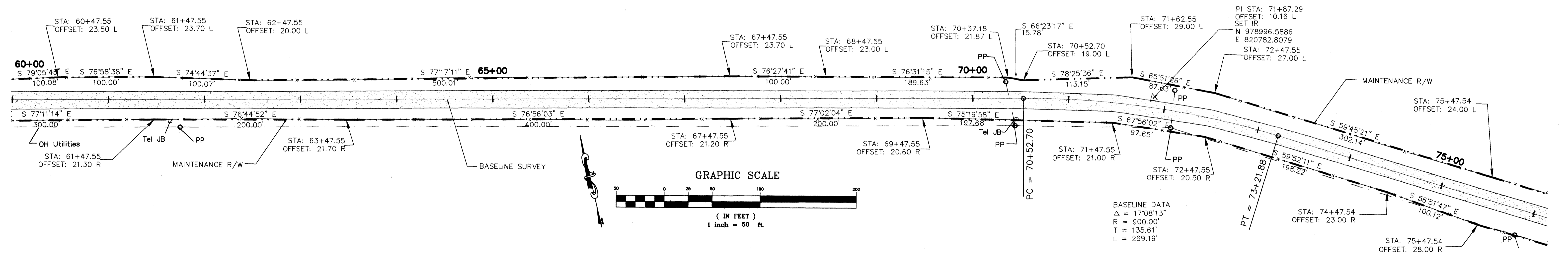
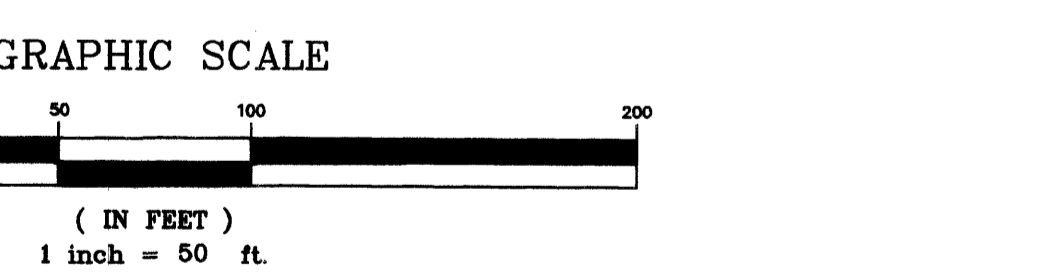
Filed for Record on Nov. 17, 1995  
 in Plat Book 13, Page 97  
 File # 1145620  
 Masha Still  
 Clerk Circuit Court  
 by Charles B. Bueley, Jr.



BASELINE DATA  
 $\Delta = 17'56''16''$   
 $R = 2700.00'$   
 $T = 426.14'$   
 $L = 845.30'$



BASELINE DATA  
 $\Delta = 17'56''16''$   
 $R = 2700.00'$   
 $T = 426.14'$   
 $L = 845.30'$



BASELINE DATA  
 $\Delta = 17'08''13''$   
 $R = 900.00'$   
 $T = 135.61'$   
 $L = 269.19'$

|   |   |   |                           |
|---|---|---|---------------------------|
| <b>MARTIN COUNTY</b>  |   |   |                           |
| ENGINEERING / RIGHT OF WAY DIVISION   |   |   |                           |
| <b>MAINTENANCE MAP</b>  |   |   |                           |
| WEST FARMS ROAD   |   | MARTIN COUNTY, FLORIDA  |                           |
| DRAWN BY: JAC/ RWB  | DATE: FEBRUARY 1994                           | APPROVED BY:  | DATE:                     |
| CHECKED BY: RWB   | DATE: FEBRUARY 1994                           |   |                           |
| SCALE: 1" = 50'   |   | MARTIN COUNTY SURVEY AND RIGHT OF WAY DEPARTMENT  |                           |
| MAPS PREPARED BY:<br><b>RICHARD W. BUSSELL, INC.</b><br>1320 S. FEDERAL HIGHWAY<br>SUITE 210<br>STUART, FLORIDA 34994 | FIELD BOOK NOS:<br>93-003<br>93-004<br>93-005 | SECTION:<br><b>SEC. 35, TWP. 39 S., RGE. 38E</b><br><b>SEC. 1-2, TWP. 40 S., RGE. 38E</b> | SHEET<br><b>2</b><br>OF 3 |